

BALDOR • RELIANCE

Customer information packet

VJPFPM2550T-5

100HP, 3530RPM, 3PH, 60HZ, 365JP, 4260M, OPSB

Specifications

Enclosure	OPSB
Frame	365JP
Frame Material	Steel
Frequency	60.00 Hz
Motor Letter Type	Three Phase
Output @ Frequency	100.000 HP @ 60 HZ
Phase	3
Synchronous Speed @ Frequency	3600 RPM @ 60 HZ
Voltage @ Frequency	575.0 V @ 60 HZ
Agency Approvals	CSA EEV UL
Ambient Temperature	40 °C
Auxillary Box	No Auxillary Box
Auxillary Box Lead Termination	None
Base Indicator	No Mounting
Bearing Grease Type	Polyrex EM (-20F +300F)
Blower	None
Current @ Voltage	90.000 A @ 575.0 V
Design Code	B
Drip Cover	Drip Cover
Duty Rating	CONT
Efficiency @ 100% Load	93.0 %
Electrically Isolated Bearing	Not Electrically Isolated
Feedback Device	NO FEEDBACK
Front Face Code	Standard
Front Shaft Indicator	None
Heater Indicator	No Heater
High Voltage Full Load Amps	90.0 a
Insulation Class	F
Inverter Code	Not Inverter
KVA Code	F
Lifting Lugs	Vertical Lifting Lugs

Part detail

Revision	H
Type	AC
Mech. spec.	42E338
Base	
Status	PRD/A
Elec. spec.	42WG105
Layout	42LYE338
Eff. date	07-24-2023
CD Diagram	CD0382
Poles	02
Leads	6#6
Proprietary	False
Created date	07-22-2016

Locked Bearing Indicator	Locked Bearing
Motor Lead Exit	Ko Box
Motor Lead Quantity/Wire Size	6 @ 6 AWG
Motor Lead Termination	Flying Leads
Motor Standards	NEMA
Motor Type	4260M
Mounting Arrangement	F1
Number of Poles	2
Overall Length	33.50 IN
Power Factor	89
Product Family	Fire Pump Motor
Pulley End Bearing Type	Ball
Pulley Face Code	C-Face
Pulley Shaft Indicator	Tapped & Key
Rodent Screen	Included
Service Factor	1.15
Shaft Diameter	1.577 IN
Shaft Extension Location	Pulley End
Shaft Ground Indicator	No Shaft Grounding
Shaft Rotation	Reversible
Shaft Slinger Indicator	Shaft Slinger
Speed	3530 rpm
Speed Code	Single Speed
Starting Method	Wye Start - Delta Run
Thermal Device - Bearing	None
Thermal Device - Winding	None
Vibration Sensor Indicator	No Vibration Sensor
Winding Thermal 1	None
Winding Thermal 2	None

Nameplate

NP3454L

CAT.NO.	VJPFPM2550T-5	CUST P/N		I.P.	23
SPEC.	42E338X105H2	SER.NO.		FRAME	365JP
HZ	60	HP	100	RPM	3530
VOLTS	575	CODE	F	VOLTS	
AMPS	90	DES	B	AMPS	
EFF	93	SER.F.	1.15	PF	89
RATING	40C AMB-CONT	DE BRG	6313	GREASE	POLYREX EM
BLANK		ODE BRG	6311	MTR. WT.	523
		CLASS	F	PH	3
		ENCL	OPSB	CC	010A
HTR-VOLTS		HTR-AMPS		HTR-WATTS	

Parts list

Part number	Description	Quantity
SA324660	SA 42E338X105H2	1.000 ea
RA312500	RA 42E338X105H2	1.000 ea
HA6360	LIFTING LUG FOR 42 FRAME MOTORS.	2.000 ea
HA6017	CAST ADAPTER, 40,42 KOBX	1.000 ea
19XW3118A12	.31-18 X .75 HEX WASHER HEAD TAPTITE II	2.000 ea
HW1001A31	LOCKWASHER 5/16, ZINC PLT.591 OD, .319 I	2.000 ea
WD1000B25	GND LUG, BURNDY L125HP OR T&B L125HP-BB	1.000 ea
19XW3118G08	.31-18X.50,HEX WSHR HD,TAPTITE 2,GREEN	1.000 ea
10CB3002	CONDUIT BOX CAST W/3.625 LEAD HOLE	1.000 ea
19XW3118A12	.31-18 X .75 HEX WASHER HEAD TAPTITE II	4.000 ea
HW1001A31	LOCKWASHER 5/16, ZINC PLT.591 OD, .319 I	4.000 ea
42EP3200A02	FR ENDPLATE, MACH	1.000 ea
HA1108A01	RODENT SCREEN	1.000 ea
51XW1032A06	10-32 X .38, TAPTITE II, HEX WSHR SLTD S	4.000 ea
HW5100A13	W4627-047 WVY WSHR	1.000 ea
42EP1400A03	PU ENDPLATE, MACH W/ RODENT SCREENS	1.000 ea
HA1165A02	RODENT SCREEN FOR 42 PU. C-FACE E.P.	1.000 ea
51XW1032A06	10-32 X .38, TAPTITE II, HEX WSHR SLTD S	1.000 ea
10XN3816K56	3/8-16 X 3 1/2 HEX HEAD MACHINE SCREW,	4.000 ea
HW1001A38	LOCKWASHER 3/8, ZINC PLT .688 OD, .382 I	4.000 ea
HA7204	"L" SHAPE LIFTING LUG FOR 42 FRAME MOTOR	2.000 ea
XY5013A12	NUT,1/2-13,HEX,STEEL,ZINCPLATED	8.000 ea
42FH2500A01	DRIP COVER MOD 42 OPEN	1.000 ea
10XN2520K12	1/4-20 X.75 GRD 5	4.000 ea
HW1001A25	LOCKWASHER 1/4, ZINC PLT .493 OD, .255 I	4.000 ea
10CB3500SP	CONDUIT BOX LID, CAST	1.000 ea
51XW2520A12	.25-20 X .75, TAPTITE II, HEX WSHR SLTD	4.000 ea
HW4600B82	V-RING SLINGER 2.500 X 2.900 X .28 VITON	1.000 ea
HW2501G18	SQUARE STEEL KEY .375 X 2.00 LONG	1.000 ea
LB1182	WARNING LABEL FOR MOTORS WITH EYENUTS	1.000 ea
HA4051A00	PLASTIC CAP FOR GREASE FITTING	1.000 ea

HW4500A03	GREASE FITTING, .125 NPT 1610(ALEMITE) 8	1.000 ea
HW4500A17	317400 ALEMITE GREASE RELIEF	1.000 ea
MJ1000A02	GREASE, POLYREX EM EXXON	0.030 lb
HA4051A00	PLASTIC CAP FOR GREASE FITTING	1.000 ea
HW4500A03	GREASE FITTING, .125 NPT 1610(ALEMITE) 8	1.000 ea
HW4500A17	317400 ALEMITE GREASE RELIEF	1.000 ea
MG1025R44	WILKOFAS, 784.109, CARMINE RED #3002	0.050 ga
85XU0407S04	4X1/4 U DRIVE PIN STAINLESS	4.000 ea
HA3151A08	THRUBOLT STUD 1/2-13 X 21.000	4.000 ea
42AD2001B01	BAFFLE PLATE 42 OPEN, SLOTTED BAND MTRS	1.000 ea
LB1624	COMBINED WARNING LABEL, ISO/ANSI PICTOGR	1.000 ea
42AD2001B01	BAFFLE PLATE 42 OPEN, SLOTTED BAND MTRS	1.000 ea
LC0382	CONNECTION LABEL	1.000 ea
NP3454L	ALUM FIRE PUMP MOTOR(LEGACY/BALDOR ONLY)	1.000 ea
10PA1052	PACKAGING GROUP, PRINT PK1151A06	1.000 ea
MN416A01	TAG-INSTAL-MAINT no wire (2100bx)4/22	1.000 ea

AC Induction Motor Performance Data

Record # 58315

Typical performance - not guaranteed values

Winding: 42WGX105-R001		Type: 4260M	Enclosure: OPSB
Nameplate Data		575 V, 60 Hz: Single Voltage Motor	
Rated Output (HP)	100	Full Load Torque	148 LB-FT
Volts	575	Start Configuration	direct on line
Full Load Amps	90	Breakdown Torque	505 LB-FT
R.P.M.	3530	Pull-up Torque	201 LB-FT
Hz	60 Phase	Locked-rotor Torque	244 LB-FT
NEMA Design Code	B KVA Code	Starting Current	547 A
Service Factor (S.F.)	1.15	No-load Current	21.1 A
NEMA Nom. Eff.	93 Power Factor	Line-line Res. @ 25°C	0.0974 Ω
Rating - Duty	40C AMB-CONT	Temp. Rise @ Rated Load	56°C
S.F. Amps		Temp. Rise @ S.F. Load	68°C
		Locked-rotor Power Factor	20.9
		Rotor inertia	4.69 LB-FT ²

Load Characteristics 575 V, 60 Hz, 100 HP

% of Rated Load	25	50	75	100	125	150	S.F.
Power Factor	67	83	87	89	88	87	88
Efficiency	91.9	94.1	93.9	93.2	92.1	90.6	92.5
Speed	3587	3572	3555	3536	3514	3490	3523
Line amperes	30.8	48.2	68.7	90.3	114	140	105

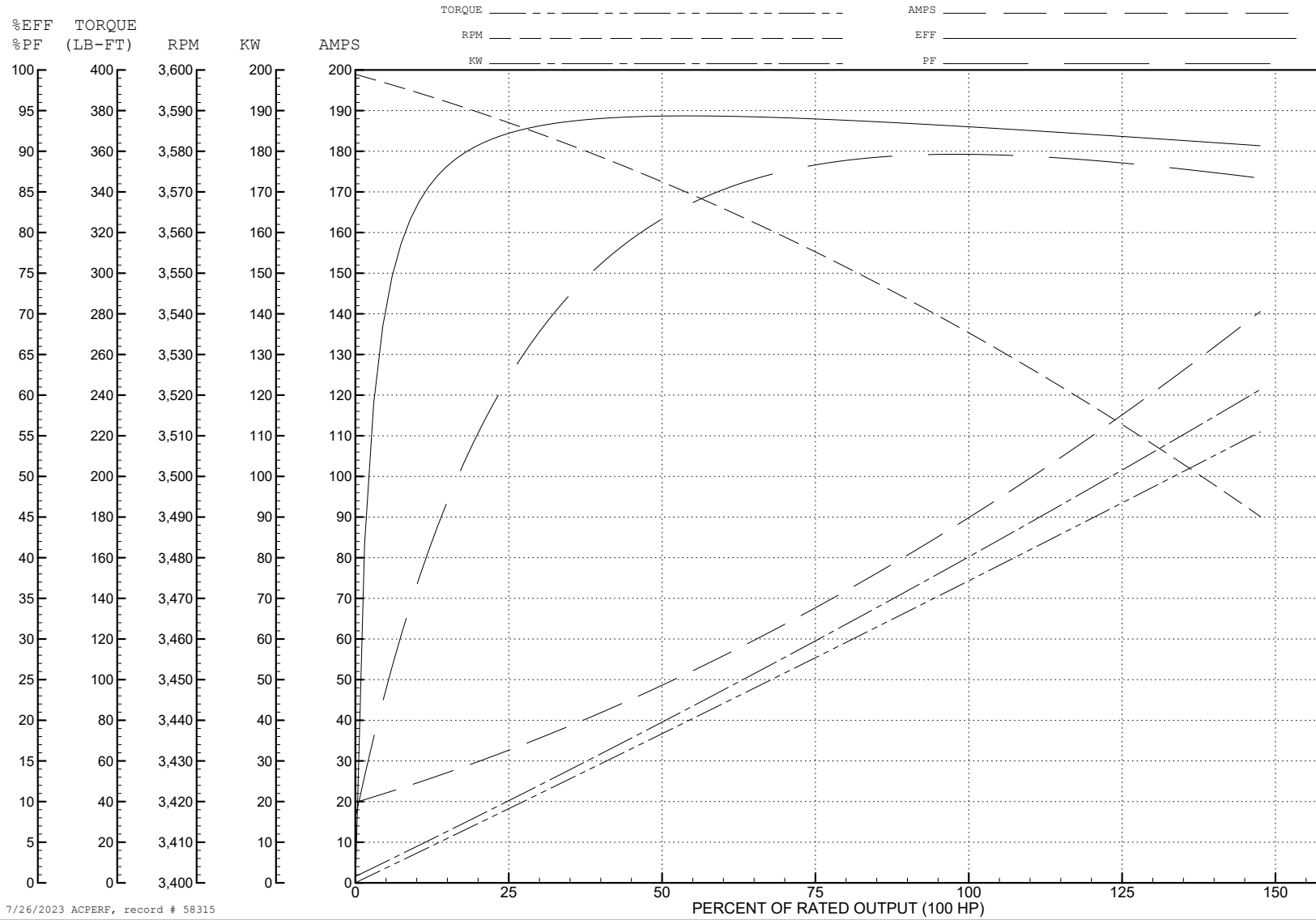
ABB Motors and Mechanical Inc.

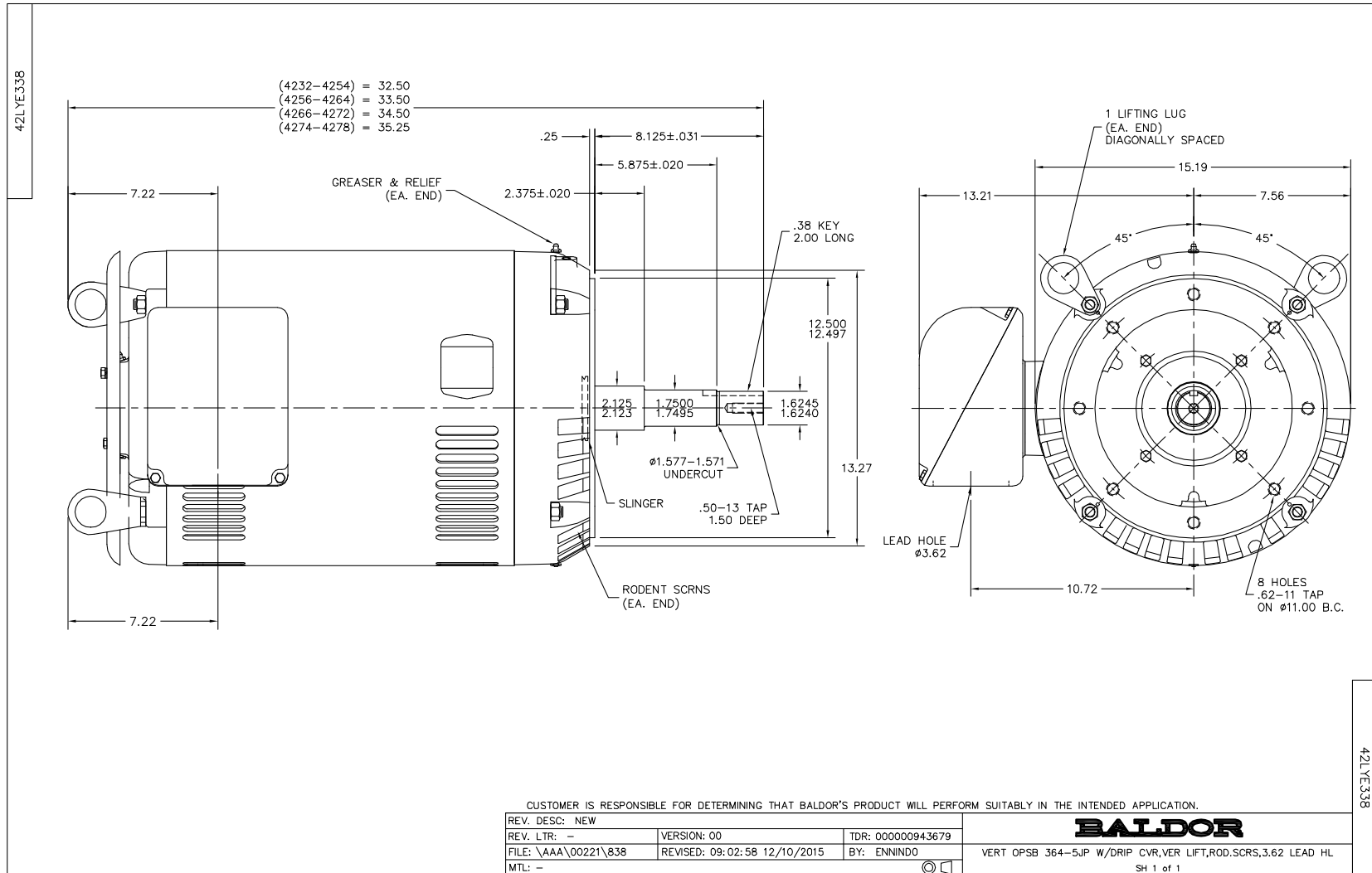
WINDING # 42WGX105

100 HP 3 PH 60 HZ 3530 RPM 575 V 4260M

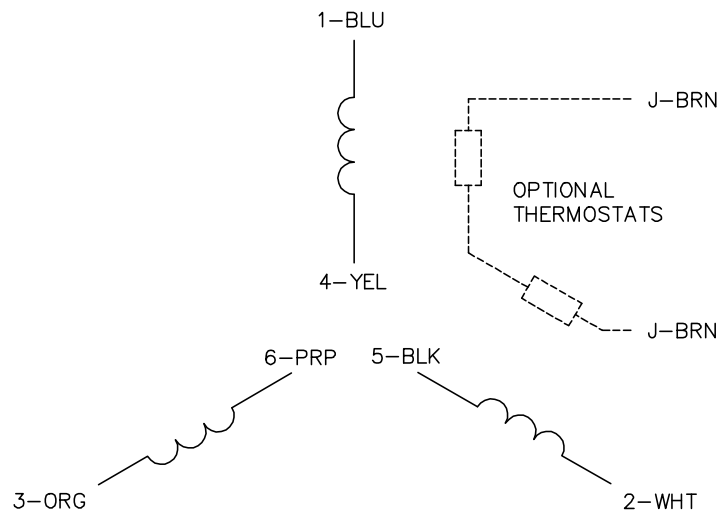
Typical performance - not guaranteed values.

TORQUES (LB-FT): PO=505 PU=201 LR=244 LRA=547

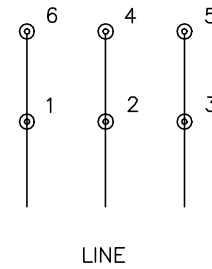




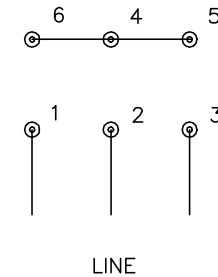
CD0382



RUN CONNECTION (1D)



START CONNECTION (1Y)



NOTES:

1. INTERCHANGE ANY TWO LINE LEADS TO REVERSE ROTATION.
2. OPTIONAL THERMOSTATS ARE PROVIDED WHEN SPECIFIED.
3. ACTUAL NUMBER OF INTERNAL PARALLEL CIRCUITS MAY BE A MULTIPLE OF THOSE SHOWN ABOVE.
4. LEAD COLORS ARE OPTIONAL. LEADS MUST ALWAYS BE NUMBERED AS SHOWN.
5. FOR ACROSS-THE-LINE STARTING, USE 'RUN' CONNECTION.

CD0382

REV. DESC: ADD CLASS CONN00000007		
REV. LTR: F	VERSION: 01	TDR: 000001099922
FILE: \AAA\00005\243	REVISED: 09:05:32 02/19/2019	BY: ENBRIRO
MTL: -	© □	

BALDOR - RELIANCE®

3PH, SV, 6 LEADS, Y START/D RUN

SH 1 of 1